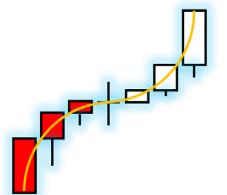


2 April 2022

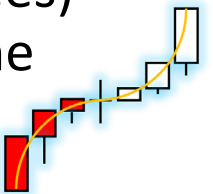
And we're back @
TIP's Alert Show

Alert # 13 of 52



IMPORTANT DISCLAIMER!

The information presented and made available on any company content is **intended for educational purposes only**. **Trade at your own risk**. The information is not and should not be confused with investment advice and does not attempt or claim to be a complete description of any specific securities or markets, but rather educational examples of the application of technical analysis to the market. This information has been presented and prepared without regard to any particular person's investment objectives, financial situation and particular needs because course attendees come from diverse backgrounds, with diverse objectives and financial situations. This information is of a general nature only so you should seek advice from your broker or other investment advisors as appropriate before taking any action. Your licensed securities professional, financial consultant, or tax advisor best renders investment advice. The opinions and analyses included herein are based on sources and data believed to be reliable and are presented in good faith; however, no representation or warranty, expressed or implied is made as to their completeness or accuracy. It is imperative to understand your investment risks since all stock and option investments involve significant risk. The Inflection Point Inc., in addition to all individuals of the company, are not liable for expenses (including attorney fees) and/or damages arising out of claims resulting from the use of this educational content. The Inflection Point Inc. is not a licensed investment advisor.



THIS week's trade highlight is **SGML!!**

SGML

Apr 1 O:13.98 H:16.59 L:13.90 C:15.53 AH:15.68 Vol:1.08M

AH: +0.15 (0.97%)

+1.94 (14.28%)

SMA 50
BB 20,2
EMA 100
EMA 200

Market Cap	1.95B
Income	-19.20M
Sales	-
Book/sh	0.68

Shs Outstanding	87.37M	Perf Week	6.88%
Shs Float	45.08M	Perf Month	39.16%
Short Float	0.20%	Perf Quarter	49.18%
Short Ratio	0.36	Perf Half Y	76.48%
Target Price	-	Perf Year	288.25%
52W Range	3.84 - 15.22	Perf YTD	49.18%
52W High	2.04%	Beta	0.52
52W Low	304.43%	ATR	1.04
RSI (14)	72.81	Volatility	9.49% 7.66%
Rel Volume	4.31	Prev Close	13.59
Avg Volume	250.52K	Price	15.53
Volume	1.080.081	Change	14.28%



30-Minute Chart

Disclaimer: I own this position

TIP's_Trade_Template.xlsx (available for FREE / Inquire in comments)

4/2/2022

Account balance

\$ 100,000.00

Position Sizing	Symbol	Entry Price	# of Shares	Target	Stop	Chart	Pattern	Risk
25%	SGML	\$15.45	1618	30% \$ 20.09	-15.0% \$ 13.13	30 min	Breakout	\$ 3,750.00
15%				40%	-15.0%	Daily	Pullback	\$ 2,250.00
5%						Daily	High Base	\$ 750.00
2%						15 min	Bull Flag	\$ 300.00
1%						Daily	Bull Flag	\$ 150.00

Join [Friday Traders](#)
Group on Fb for
more ideas

@theinflectionpt

Friday
Traders
Group



The Inflection Point Inc.

**NOW OFFERING FREE COURSES
FOR MILITARY & VETERANS**