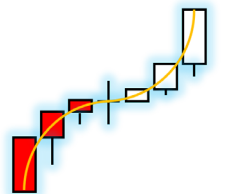


19 Feb 2022

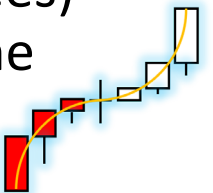
And we're back @
TIP's Alert Show

Alert # 7 of 52



IMPORTANT DISCLAIMER!

The information presented and made available on any company content is **intended for educational purposes only**. **Trade at your own risk**. The information is not and should not be confused with investment advice and does not attempt or claim to be a complete description of any specific securities or markets, but rather educational examples of the application of technical analysis to the market. This information has been presented and prepared without regard to any particular person's investment objectives, financial situation and particular needs because course attendees come from diverse backgrounds, with diverse objectives and financial situations. This information is of a general nature only so you should seek advice from your broker or other investment advisors as appropriate before taking any action. Your licensed securities professional, financial consultant, or tax advisor best renders investment advice. The opinions and analyses included herein are based on sources and data believed to be reliable and are presented in good faith; however, no representation or warranty, expressed or implied is made as to their completeness or accuracy. It is imperative to understand your investment risks since all stock and option investments involve significant risk. The Inflection Point Inc., in addition to all individuals of the company, are not liable for expenses (including attorney fees) and/or damages arising out of claims resulting from the use of this educational content. The Inflection Point Inc. is not a licensed investment advisor.



THIS week's trade highlight is **HOOK!!**

HOOK

Feb 18 O:2.07 H:2.61 L:2.07 C:2.48 AH:2.49 Vol:68.12M

AH: +0.01 (0.40%)

+0.48 (24.00%)

SMA 50
BB 20,2
EMA 100
EMA 200

30 MIN

Shs Outstand	32.87M	Perf Week	93.75%
Shs Float	23.54M	Perf Month	40.91%
Short Float	10.47%	Perf Quarter	-30.92%
Short Ratio	0.68	Perf Half Y	-61.96%
Target Price	8.37	Perf Year	-79.05%
52W Range	1.25 - 20.00	Perf YTD	6.44%
52W High	-87.60%	Beta	-
52W Low	98.40%	ATR	0.23
RSI (14)	70.20	Volatility	14.85% 11.16%
Rel Volume	18.82	Prev Close	2.00
Avg Volume	3.62M	Price	2.48
Volume	68,122,518	Change	24.00%

Market Cap	78.86M
Income	-66.90M
Sales	19.70M
Book/sh	3.29



Disclaimer: We may or may not have a position in this company

TIP's Trade Template (available for free download / Inquire in comments)

2/18/2022

Account balance

\$

100,000.00

Position Sizing	Symbol	Entry Price	# of Shares	Target	Stop	Chart	Pattern
25%	HOOK	\$2.50	10000	\$ 3.25	\$ 2.13	30 min	Breakout
15%				40%	-15.0%	Daily	Pullback
5%						Daily	High Base
2%						15 min	Bull Flag
1%						Daily	Bull Flag

Join [4 Min Trading Group on Fb](#) for more ideas

See you next
weekend!

26 Feb 2022

4 Min
Traders
Group



@theinflectionpt



The Inflection Point Inc.